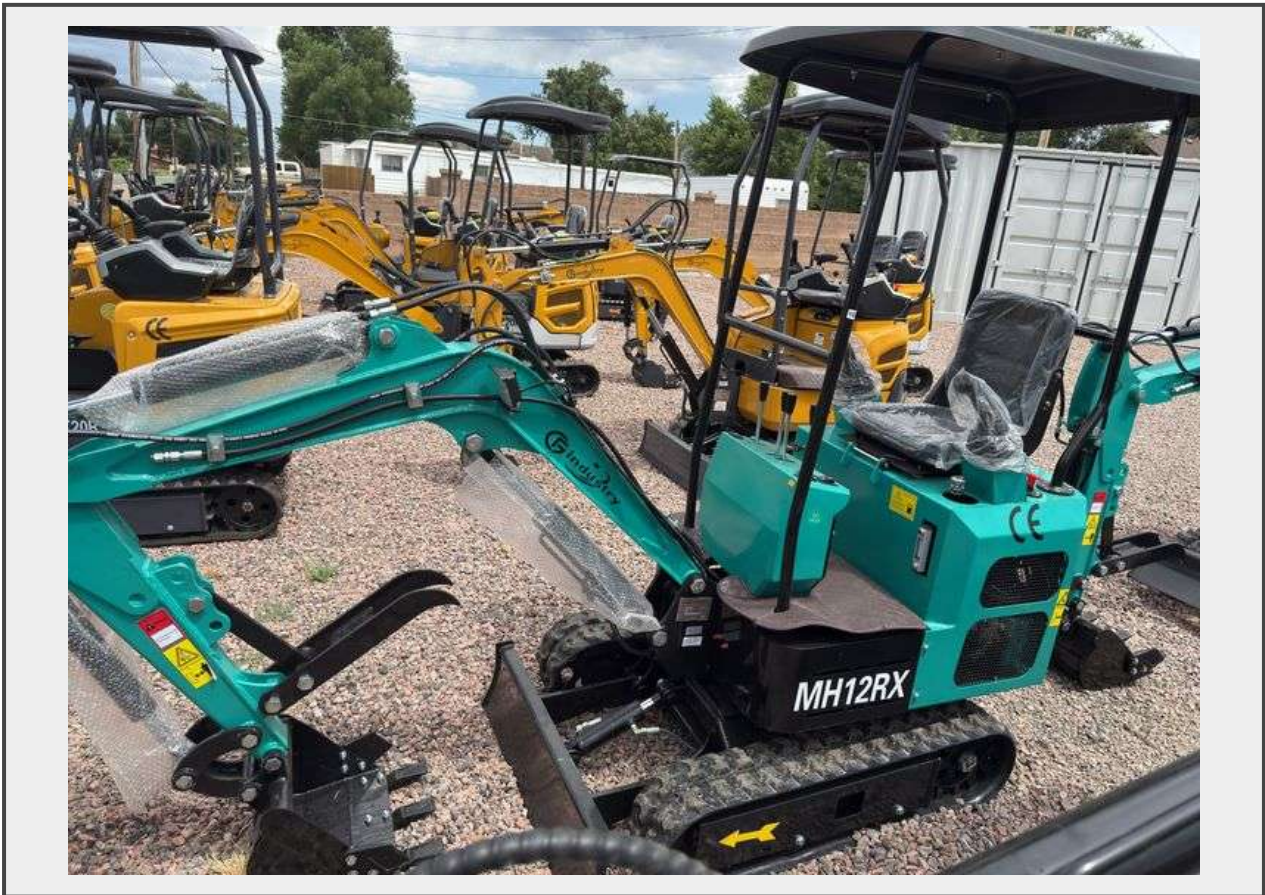


Sale Name: August Equipment and equipment Accessories Auction

LOT 1695 - CFG Industry MH12RX Mini Excavator



Condition New

Lot Location Elm Ave storage lot

Description

Was lot 669. Starts, but is having issues with using the hydraulic arm.

[CFG Industrial MH12RX Mini Excavator](#)

is a compact and lightweight mini excavator designed for residential, landscaping, and small construction projects.

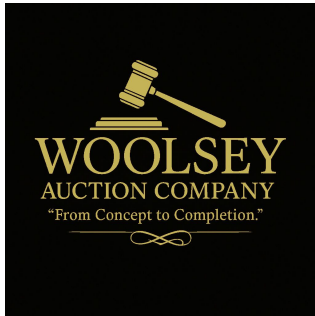
Here's a breakdown of its features and specifications:

- **Engine:** Powered by a 13.5 hp RATO gasoline engine, also listed as a 15hp gas engine or a 1 cylinder 15hp gas engine in some sources. It is noted for strong performance and good fuel economy.
- **Operating Weight:** Approximately 1,900 lbs. Other sources mention an operating weight of 816 kg (approx. 1,798 lbs) or 1 ton.
- **Digging Capabilities:**
 - Maximum digging depth of approximately 5.9 - 8 feet, depending on the source.
 - Maximum digging height of approximately 9.8 feet.
 - Bucket capacity of 0.03 m³ or 1.06 cubic feet.
- **Hydraulics:**
 - Pilot control hydraulic system for smooth and precise operation.
 - Plumbed for auxiliary hydraulics to accommodate various attachments.

• **Features:**

- Comes with a 16" tooth bucket.
- Has a 36" dozer/backfill blade.
- Equipped with an adjustable or manual thumb attachment.
- 7" rubber tracks.
- Canopy for sun protection.
- Work lights for visibility.
- Battery shut-off switch.
- Features a third valve for additional hydraulic attachments.

Quantity: 1



<https://bid.woolseyauction.com/>